

WL75 Extruded Aluminium Louvred Non-Vision Screen With Visible Mullions  
 Louvres Manufactured & Supplied To Site In Modular Form

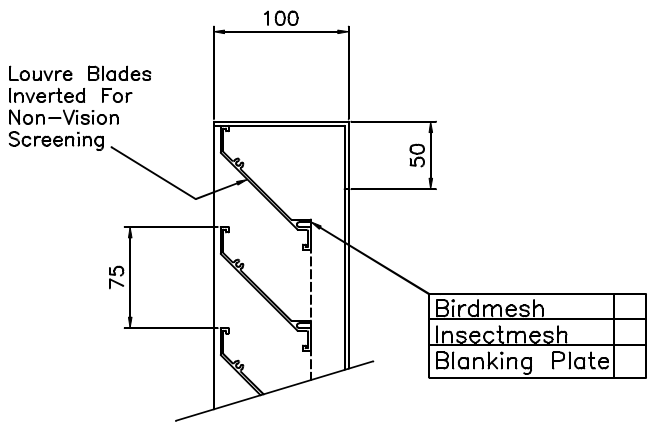
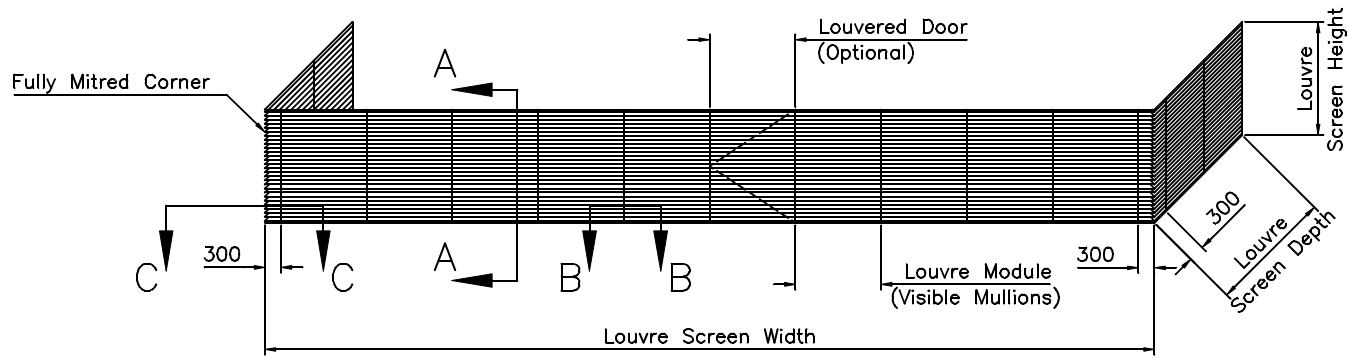
Notes  
 All dimensions must be checked on site and not scaled from this drawing

WL75 Louvre System

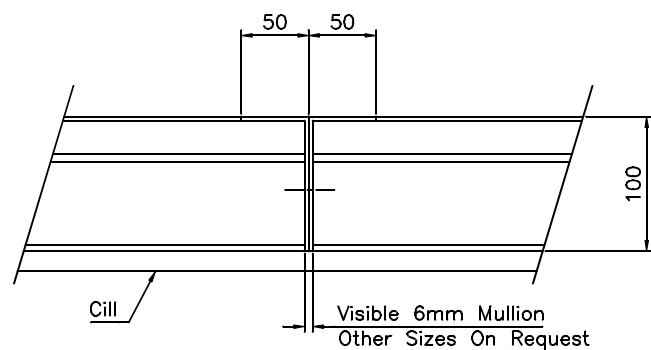
Material  
 Extruded Aluminium Frame & Blades.

Blade Thickness 2mm  
 Frame Thickness 3mm  
 Louvre Depth 100mm  
 Louvre Pitch 75mm  
 Blade Angle 45°

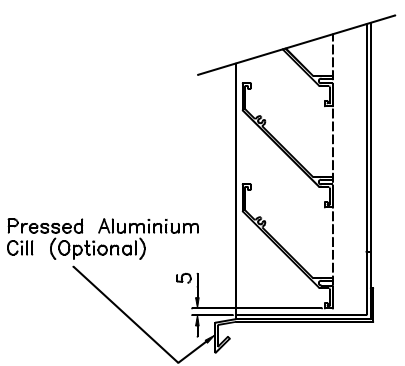
Finish:  
 Polyester Powder Coated  
 Colour Ref: \_\_\_\_\_



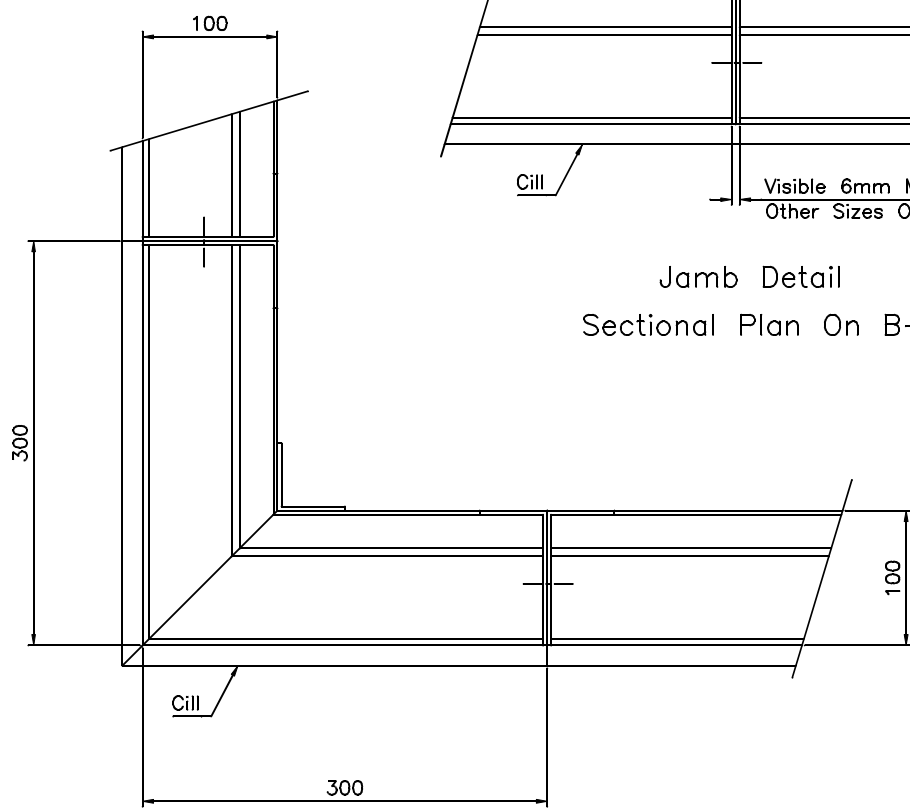
Head Detail



Jamb Detail  
 Sectional Plan On B-B




Cill Detail  
 Sectional Side Elevation On A-A



Mitred Corner Detail  
 Sectional Plan On C-C

Date	Revisions

LINCO ENGINEERING  
 MIDLANDS LTD  
 88 Herring Road,  
 Washford Industrial Estate,  
 Redditch,  
 WORCS,  
 B98 0EA.  
 TEL: (01527) 518333  
 FAX: (01527) 518666  
 e-mail: linco@btconnect.com  
 www.lincoengineering.com



Client.

Project.

Drawing Title  
 WL75 Extruded  
 Aluminium Louvred  
 Screen Details

Scale 1:2

Date Jan08 Drawn by:K.P

Dr. No.	Rev.
WL75 Screen Inverted	—